



## P-130 Technical Datasheet

### Titanium Pressure Sensor

- Extremely robust and accurate tank gauging sensor
- Absolute gauging technique - sensor completely sealed
- Made in high grade Titanium, highly resistive to corrosive warm ballast water.
- Semi flush diaphragm and low movement - reading is normally not affected by sludge or wet sediments

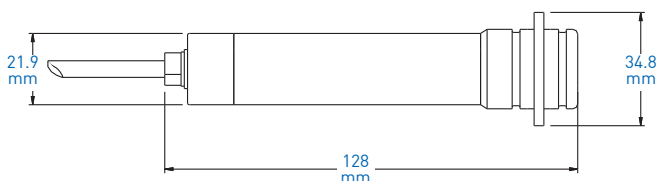
CARGOMASTER®

**KROHNE**  
Marine

## Technical data

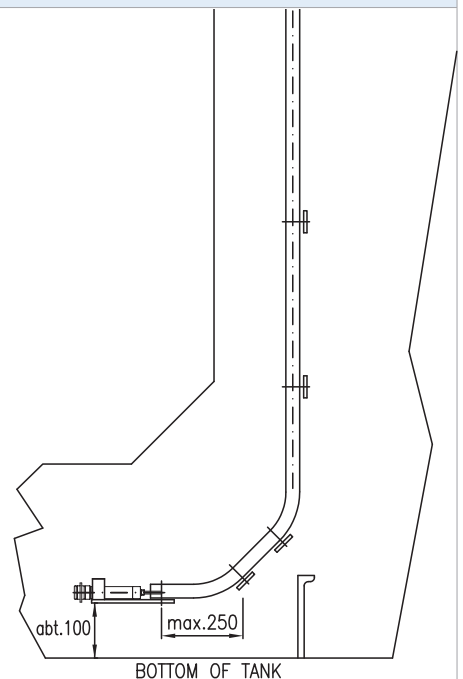
Measuring data	
Measuring principle	Absolute pressure (no vent tube)
Pressure ranges (absolute)	0.7...2.0 bar / 10...30 psi 0.7...3.5 bar / 10...50 psi 0.7...5.0 bar / 10...80 psi
Overpressure capabilities	18 bar / 261 psi (0.7...2.0 bar) 22 bar / 319 psi (0.7...3.5 bar) 25 bar / 362 psi (0.7...5.0 bar)
Burst pressure	150 bar / 2176 psi
Moving distance pressure element	30 µm / 0.001"
Measuring accuracy	
Overall accuracy	+/- 0.25% Full Range Output (FRO)
Long term stability	+/- 0.05% Full Range Output (FRO)
Ambient conditions	
Compensated temp. range	-20...+80 °C / -4...+175 °F
Operating temp. range	-40...+125 °C / -40...+260 °F
Ingress protection	IP68
Product conditions	
Media	Measures all liquids
Materials	
Pressure element	Ceramic capacitive element
Ceramic diaphragm	99.9% Al <sub>2</sub> O <sub>3</sub>
Housing	Titanium GR II
Sealing	Completely filled with PUR
Power supply	
Supply voltage	18...32 V DC
Output	
Signal output	4...20 mA
Certificates and approvals	
Ex approval	EEx ia IIC T4...T6
Type approvals	All major classification societies

### Dimensions



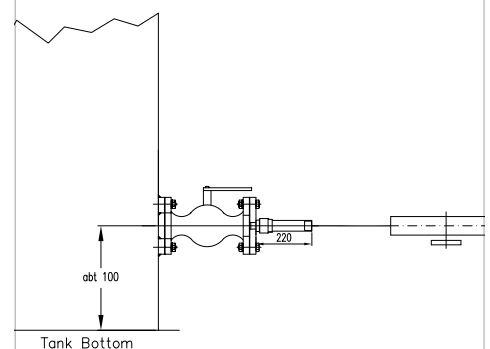
For further technical details, please contact:  
KROHNE Marine  
Stromtangveien 21, NO-3950 Brevik, NORWAY  
Tel.: +47 35 56 12 20, Fax: +47 35 56 12 21  
support@krohne.no

### Typical ballast tank arrangement



- Sensor clamped to fastening bracket close to bottom of tank
- Sensor cable mechanically protected by PEH pipe (30 mm)
- Tank top penetration with high pressure gland or weld-in junction box

### Sidemounted ballast tank arrangement



- Sensor mounted on threaded union with flange
- Sensor protected in pipe on arr. against stepping etc.
- Must be type approved valve for fuel tanks and draught applications

**KROHNE**  
Marine

www.krohne-marine.com